

EVO *Corse*

CATALOGUE





INTRO

Our story begins in 2002, when Luca Meneghetti and Fabrizio Facini, two engineers with a strong passion for racing cars, found Seido Design Engineering. After two years of activity dedicated to design wheels for the most important manufacturers, the Company creates its own brand of alloy wheels.

EVO Corse debuts with the Sanremo-Corse 15" model in the rally championship in South Africa and, from then on, it sees itself as protagonist of increasingly prestigious competitions, until it becomes the major supplier of the Dakar Rally for several consecutive years.

The know-how, gained in over 20 years of experience in motorsport and through the collaboration with the greatest manufacturers, allows the constant development of new products: from the expansion of the range of alloy wheels to the production of ultra-fast hydraulic jacks and insulating plates for brakes.



OUR DIVISIONS



TARMA^{RALLY}



GRAVEL^{RALLY}



RALLY RAID
OFF-ROAD



CIRCUIT



LEGEND



ROAD

INDEX

ARTICLE	PAGE
DAKARFORGED 17"	8
X3MAFORGED 18"/19"/20"	9
SANREMOCORSE 16"/17"/18"	12
SANREMOCORSE GR. A 17"	13
Z.A.R. 18"	14
SPORT 14"	15
X3MA 15"	16
OLYMPIACORSE 15"/16"	17
SANREMOCORSE 15"	18
Z.A.R 15"	19
DAKARZERO 14"	20
DAKARCORSE 16"	21
DAKARZERO 15"/16"/17"	22
DAKARSUPERZERO 17"	23
DAKARZERO 18"	24
SANREMOZERO 17"	25
EXCALIBUR 18"	26
GTR 18"	27
FORMULACORSE 13"	28
X3MAZERO 13"	29
X3MAZERO 15"	30
SB9 RAGNO 17"	32
RALLYZERO 17"/18"	33
MONTECORSE 17"	34
MONTECORSE 18"	35
EVOJACK	37
EVOCRK	38
OFFCRK	39
EVOJACK QUADRA	40
PDEF	42
HARDWARE / SPACERS / ACCESSORIES	41 - 45
THERMAL BOTTLE / MUG	46
T-SHIRTS / HOODIES	47

DAKARFORGED
17"



PG 8

SPORT
14"



PG 15

DAKARZERO
14"



PG 20

SANREMOZERO
17"



PG 25

X3MAZERO
15"



PG 30

X3MAFORGED
18"/19"/20"



PG 9

SANREMOCORSE
16"-17"-18"



PG 12

SANREMOCORSE
GROUP A - 17"



PG 13

Z.A.R.
18"



PG 14

X3MA
15"



PG 16

OLYMPIACORSE
15"-16"



PG 17

SANREMOCORSE
15"



PG 18

Z.A.R.
15"



PG 19

DAKARCORSE
16"



PG 21

DAKARZERO
15"-16"-17"



PG 22

DAKARSUPERZERO
17"



PG 23

DAKARZERO
18"



PG 24

EXCALIBUR
18"



PG 26

GTR
18"



PG 27

FORMULACORSE
13"



PG 28

X3MAZERO
13"



PG 29

RALLYZERO
17"/18"



PG 32

SB9RAGNO
17"



PG 33

MONTECORSE
17"



PG 34

MONTECORSE
18"



PG 35

EVO *Corse* FORGED WHEELS

Forged wheels production takes place through a processing method called **“forging”**.

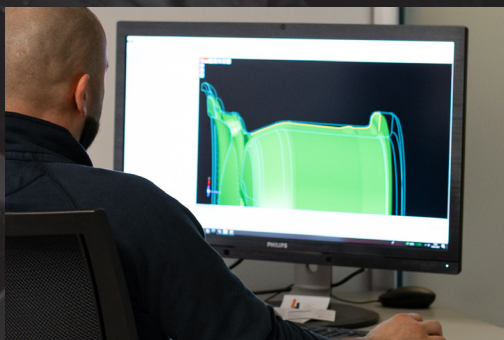
This kind of processing starts from a single metal block and the final shape is obtained by eliminating the excess material through mechanical machining.

The forging allows to obtain more resistant and lightweight alloy wheels, as well as the absence of porosity and the perfect distribution of weight at each point of the wheel.



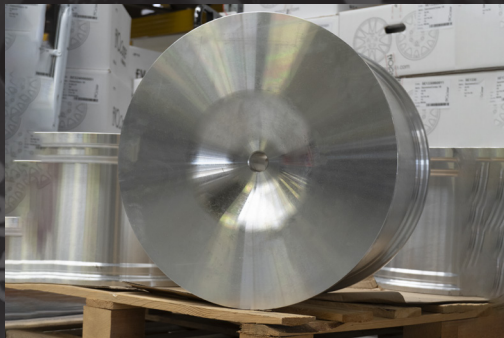
PRODUCT DESIGN

The design takes place through the creation of a 3D model which decides the final design of the product. Then, thanks to a FEM software, the loads and stress resistance of the wheel are simulated.



FORGING

An aluminum block, also called "Billet", is shaped by a 12,000 Ton press until it acquires a wheel look alike shape. Through this process and a particular heat treatment, the material acquires special mechanical properties thanks to a unique crystalline grain and to the fact that we start from aeronautical alloy.



MACHINING

Through the turning and milling phase with CNC machines, the width is obtained and the desired offset is fixed. With the milling process we create the definitive design of the wheel, eliminating the excess material and defining the spokes.



MICROBLASTING & VARNISHING

After mechanical treatments, the wheel undergoes to microblasting treatment, performed to get the surface ready for varnishing treatment, making it glossy and improving its hardness and mechanical resistance. The last operation is varnishing, when various paint layers are applied, and finally the wheel is ready for packaging and shipping.

DAKARFORGED

17"

The "tamed" version of the wheel used during the **Dakar '23** by the winner **Nasser Al Attiyah**. Proposed with geometries suitable for fit on the vehicles of the users who want **extreme performance** for their cars.



SIZE	ET Min	ET Max	PCD Min	PCD Max	Weight (kg)
8,5x17	-15 (*)	55	114,3 x 5	150 x 5	From 11,4 to 12,2

*150 x 5 - ET min 0

AVAILABLE COLORS

STANDARD COLORS



WHITE

MATT BLACK

GLOSSY BLACK

SILVER

GOLD

MATT ANTHRACITE

GLOSSY ANTHRACITE

MATT BRONZE

GLOSSY BRONZE

X3MAFORGED

The wheel forged in aerospace alloy and designed for extreme competitions. The **forging technique** and the CNC machining guarantee exceptional strength and lightness. Sizes and applications on request.

18" / 19" / 20"



SIZE	ET Min	ET Max	PCD Min	PCD Max	Weight (kg)
8 - 13 x 18"	-	-	98 x 4	130 x 5	From 8.0 to 10.0
8,5 - 11 x 19"	-	-	98 x 4	130 x 5	From 9.0 to 11.0
8,5 - 11 x 20"	-	-	98 x 4	130 x 5	From 9.5 to 11.5

AVAILABLE COLORS

STANDARD COLORS



WHITE

MATT BLACK

GLOSSY BLACK

SILVER

GOLD

MATT ANTHRACITE

GLOSSY ANTHRACITE

MATT BRONZE

GLOSSY BRONZE

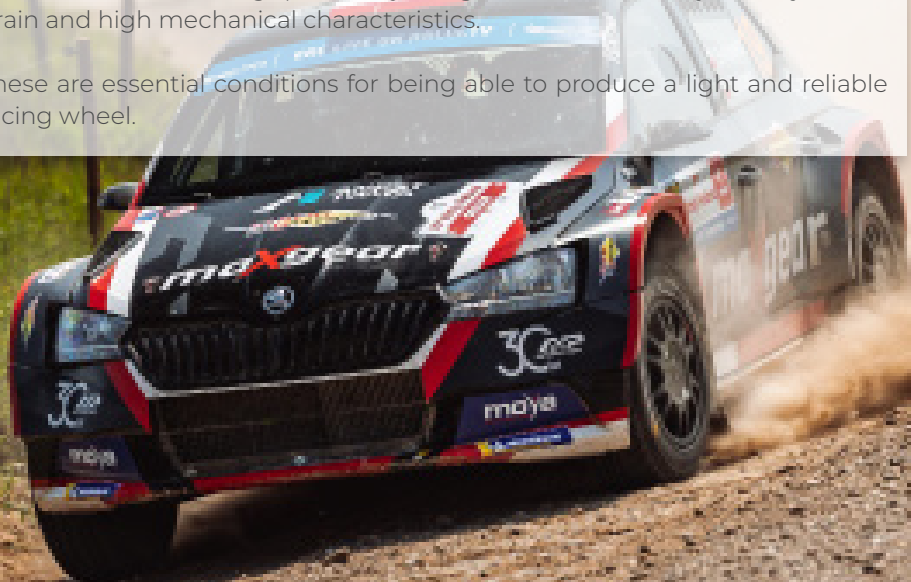
EVO *Corse* CAST WHEELS

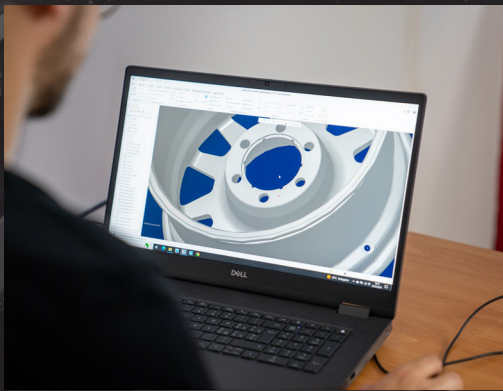
The “**casting**” is the most used technique in the production of alloy wheels. It is a process that involves the cast of aluminum alloy which is then poured into a mold of the desired shape.

This production method ensures an excellent cost/performance ratio and, for this reason, it is the technology intended for the production of large numbers.

In case of EVO Corse, casting takes place exclusively at low pressure and on steel molds with cooling specifically designed to obtain a very fine crystalline grain and high mechanical characteristics.

These are essential conditions for being able to produce a light and reliable racing wheel.





DESIGN

The design of the wheel starts from a 3D model which is used to make the casting mold. Different wheel profiles can be obtained from the same mold in order to be able to adapt it to the different needs of each vehicle.



CASTING

It starts from a primary alloy which is melted and then poured into the mould. This alloy is mainly composed of aluminum, silicon, magnesium, titanium and other components which make it resistant and suitable for the extreme uses to which the wheels will be destined. The fusion is then completed by a heat treatment of hardening and artificial aging coded as T6.

MACHINING

The raw casting is processed in several stages using the most modern CNC machines. The wheel thus obtained is subjected to quality and balancing checks before moving on to the subsequent finishing stages.



MICROBLASTING & VARNISHING

After mechanical processing, each wheel is finished by hand to remove even the smallest imperfections. Subsequently, it undergoes a microblasting treatment necessary to prepare the surface for the painting phase. The painting phase consists on 3 coats of powder and/or liquid paint that give an elegant look but at the same time is able to provide corrosion protection and abrasion resistance.



SANREMOCORSE

16"/17"/18"

The wheel designed for *tarmac rally* that had a great success on racing fields and *road cars* all over the world thanks to its optimized structure.



SIZE	ET Min	ET Max	PCD Min	PCD Max	Weight (kg)
6,5 x 16"	10	55	98 x 4	114.3 x 5	From 7.3 to 7.9
7 x 16"	17	61	98 x 4	114.3 x 5	From 7.6 to 8.0
7 x 17"	15	52	98 x 4	130 x 5	From 7.9 to 8.9
7,5 x 17"	22	58	98 x 4	130 x 5	From 8.2 to 9.9
8 x 17"	28	65	98 x 4	130 x 5	From 8.4 to 10.2
8 x 18"	8	66	98 x 4	130 x 5	From 9.1 to 11.0
9 x 18"	20	52	98 x 4	130 x 5	From 9.5 to 11.5

AVAILABLE COLORS

STANDARD COLORS

ON DEMAND COLORS



WHITE



MATT BLACK



GLOSSY BLACK



SILVER



GOLD



MATT ANTHRACITE



GLOSSY ANTHRACITE



MATT BRONZE



GLOSSY BRONZE

SANREMOCORSE

A reliable, light and resistant wheel with a two spokes profile designed to mount **the most bulky brake calipers.**

GROUP A 17"



SIZE	ET Min	ET Max	PCD Min	PCD Max	Weight (kg)
7 x 17"	27	58	98 x 4	130 x 5	From 8.2 to 8.8

AVAILABLE COLORS

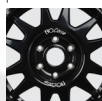
STANDARD COLORS



WHITE



MATT BLACK



GLOSSY BLACK



SILVER



GOLD

ON DEMAND COLORS



MATT ANTHRACITE



GLOSSY ANTHRACITE



MATT BRONZE



GLOSSY BRONZE

Z.A.R

18" **ZERO ALTERNATIVES TO RACING**

The resistant and light wheel dedicated to tarmac rally and characterized by the **square geometry** of the spokes and by a deep hub.



SIZE	ET Min	ET Max	PCD Min	PCD Max	Weight (kg)
8 x 18"	6	58	98 x 4	135 x 5	From 9.7 to 10.5

AVAILABLE COLORS

STANDARD COLORS

ON DEMAND COLORS



WHITE



MATT BLACK



GLOSSY BLACK



SILVER



GOLD



MATT ANTHRACITE



GLOSSY ANTHRACITE



MATT BRONZE



GLOSSY BRONZE

SPORT

14"

Perfect for small cars, Sport 14 stands out in tarmac and light gravel rally.



SIZE	ET Min	ET Max	PCD Min	PCD Max	Weight (kg)
5,5 x 14"	10	42	98 x 4	114.3 x 5	From 6.3 to 7.7
6 x 14"	16	48	98 x 4	114.3 x 5	From 6.5 to 7.8

AVAILABLE COLORS

STANDARD COLORS



WHITE



MATT BLACK



GLOSSY BLACK



SILVER



GOLD



MATT ANTHRACITE



GLOSSY ANTHRACITE



MATT BRONZE



GLOSSY BRONZE

ON DEMAND COLORS

X3MA

15"

The super light alloy wheel with an extraordinary resistance. X3MA ensures greater driveability, acceleration and cooling when braking as well as being **2 kg lighter** than the best alternatives on the market.



SIZE	ET Min	ET Max	PCD Min	PCD Max	Weight (kg)
6,5 x 15"	9	40	98 x 4	114.3 x 5	From 6.3 to 7.5
7 x 15"	16	47	98 x 4	114.3 x 5	From 6.5 to 7.7

AVAILABLE COLORS

STANDARD COLORS



WHITE



MATT BLACK



GLOSSY BLACK



SILVER



GOLD



MATT ANTHRACITE



GLOSSY ANTHRACITE



MATT BRONZE



GLOSSY BRONZE

ON DEMAND COLORS

OLYMPIACORSE

OlympiaCorse gives its best in **gravel rally**, on cars with low offset, boasting a weight-resistance ratio at the top of the category.

15"/16"



SIZE	ET Min	ET Max	PCD Min	PCD Max	Weight (kg)
6,5 x 15"	0	28	98 x 4	120 x 5	From 7.9 to 8.5
7 x 15"	6	34	98 x 4	120 x 5	From 8.0 to 8.6
6,5 x 16"	11	54	98 x 4	120 x 5	From 8.0 to 8.9

AVAILABLE COLORS

STANDARD COLORS



WHITE



MATT BLACK



GLOSSY BLACK



SILVER



GOLD



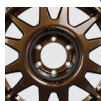
MATT ANTHRACITE



GLOSSY ANTHRACITE



MATT BRONZE



GLOSSY BRONZE

ON DEMAND COLORS

SANREMOCORSE

15"

The wheel profile, machined out of standard, allows to house **WRC brake calipers**.

SanremoCorse 15 is designed for heavy gravel rally, but it is also suitable for tarmac use.



SIZE	ET Min	ET Max	PCD Min	PCD Max	Weight (kg)
6 x 15"	17	50	98 x 4	130 x 5	From 6.9 to 8.5
6,5 x 15"	23	56	98 x 4	130 x 5	From 7.2 to 8.9
7 x 15"	30	63	98 x 4	130 x 5	From 7.8/ to 9.3

AVAILABLE COLORS

STANDARD COLORS

ON DEMAND COLORS



WHITE



MATT BLACK



GLOSSY BLACK



SILVER



GOLD



MATT ANTHRACITE



GLOSSY ANTHRACITE



MATT BRONZE



GLOSSY BRONZE

Z.A.R

ZERO ALTERNATIVES TO RACING 15"

Featuring a **low weight** and a **high strength**, Z.A.R. 15 represents a valid and reliable option for facing the most rough terrains.



SIZE	ET Min	ET Max	PCD Min	PCD Max	Weight (kg)
6,5 x 15"	16	50	98 x 4	135 x 5	From 8.3 to 9.0
7 x 15"	16	56	98 x 4	135 x 5	From 8.5 to 9.3

AVAILABLE COLORS

STANDARD COLORS



WHITE



MATT BLACK



GLOSSY BLACK



SILVER



GOLD



MATT ANTHRACITE



GLOSSY ANTHRACITE



MATT BRONZE



GLOSSY BRONZE

ON DEMAND COLORS

DAKARZERO

14"

The version of the DakarZero designed specifically for **SSVs** and tubular frame prototypes that need a small and resistant wheel in races on rough terrain.



SIZE	ET Min	ET Max	PCD Min	PCD Max	Weight (kg)
6,5 x 14"	-10	30	98 x 4	165 x 4	From 6.2 to 6.8
7 x 14"	-10	30	98 x 4	165 x 4	From 6.4 to 7.0

AVAILABLE COLORS

STANDARD COLORS

ON DEMAND COLORS



WHITE



MATT BLACK



GLOSSY BLACK



SILVER



GOLD



MATT ANTHRACITE



GLOSSY ANTHRACITE



MATT BRONZE



GLOSSY BRONZE

DAKARCORSE

DakarCorse is the most used offroad and rally-raid wheel in all types of competition and on the most extreme routes. It boasts a load index of **1.500 kg per wheel**.

16"



SIZE	ET Min	ET Max	PCD Min	PCD Max	Weight (kg)
7 x 16"	25	48	98 x 4	165 x 6	From 11.0 to 13.5

AVAILABLE COLORS

STANDARD COLORS



WHITE



MATT BLACK



GLOSSY BLACK



SILVER



GOLD



MATT ANTHRACITE



GLOSSY ANTHRACITE



MATT BRONZE



GLOSSY BRONZE

ON DEMAND COLORS

DAKARZERO

15"/16"/17"

The low ET version of DakarCorse with concave profile; a resistant wheel dedicated to **extreme offroad** with improved hump and internal spoke profile.



SIZE	ET Min	ET Max	PCD Min	PCD Max	Weight (kg)
7 x 15"	- 25	15	98 x 4	139.7 x 6	From 8.8 to 9.5
7 x 16"	-10	26	98 x 4	165 x 6	From 11.0 to 13.5
8 x 16"	-20	20	98 x 4	165 x 6	From 11.5 to 13.0
8 x 17"	0	45	98 x 4	165 x 6	From 12.5 to 14.5

AVAILABLE COLORS

STANDARD COLORS

ON DEMAND COLORS



WHITE



MATT BLACK



GLOSSY BLACK



SILVER



GOLD



MATT ANTHRACITE



GLOSSY ANTHRACITE



MATT BRONZE



GLOSSY BRONZE

DAKARSUPERZERO

DakarSuperZero is the version of the Dakar line dedicated to heavy offroad vehicles and capable of withstand up to **2.000 kg** of load per wheel.

17"



SIZE	ET Min	ET Max	PCD Min	PCD Max	Weight (kg)
8,5 x 17	-15	35	98 x 4	185 x 8	From 14.5 to 15.5
9 x 17"	-8	42	98 x 4	185 x 8	From 14.7 to 15.7

AVAILABLE COLORS

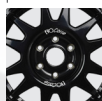
STANDARD COLORS



WHITE



MATT BLACK



GLOSSY BLACK



SILVER



GOLD



MATT ANTHRACITE



GLOSSY ANTHRACITE



MATT BRONZE



GLOSSY BRONZE

ON DEMAND COLORS

DAKARZERO

18"

The wheel dedicated to extreme offroad with a load capacity of **1.300 kg per wheel** and an extraordinary resistance.



SIZE	ET Min	ET Max	PCD Min	PCD Max	Weight (kg)
8,5 x 18"	0	45	98 x 4	165 x 6	From 11,5 to 13,5

AVAILABLE COLORS

STANDARD COLORS

ON DEMAND COLORS



WHITE



MATT BLACK



GLOSSY BLACK



SILVER



GOLD



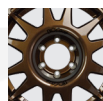
MATT ANTHRACITE



GLOSSY ANTHRACITE



MATT BRONZE



GLOSSY BRONZE

SANREMOZERO

The wheel designed for *rallycross* and *circuit racing*, equipped with a profile that recedes towards the hub allowing low offsets and protection during “door to door” contacts.

17”



SIZE	ET Min	ET Max	PCD Min	PCD Max	Weight (kg)
8 x 17"	-6	33	98 x 4	130 x 5	From 8.6 to 9.2
8,5 x 17	0	39	98 x 4	130 x 5	From 8.8 to 9.4
9 x 17"	6	45	98 x 4	130 x 5	From 9.0 to 9.6

AVAILABLE COLORS

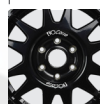
STANDARD COLORS



WHITE



MATT BLACK



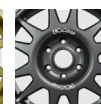
GLOSSY BLACK



SILVER



GOLD



MATT ANTHRACITE



GLOSSY ANTHRACITE



MATT BRONZE



GLOSSY BRONZE

ON DEMAND COLORS

EXCALIBUR / SPORT

18"

Excalibur 18, also known as Sport 18, is the wheel designed for the circuit and characterized by an **elegant 9-spoke design** that offers excellent performance even in tarmac rally.



SIZE	ET Min	ET Max	PCD Min	PCD Max	Weight (kg)
8 x 18"	7	54	98 x 4	130 x 5	From 10.1 to 10.6
9 x 18"	20	66	98 x 4	130 x 5	From 10.2 to 11.1
9,5 x 18"	26	72	98 x 4	130 x 5	From 10.7 to 11.4
10 x 18"	32	78	98 x 4	130 x 5	From 10.8 to 11.5

AVAILABLE COLORS

STANDARD COLORS

ON DEMAND COLORS



WHITE



MATT BLACK



GLOSSY BLACK



SILVER



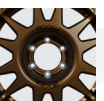
GOLD



MATT ANTHRACITE



GLOSSY ANTHRACITE



MATT BRONZE



GLOSSY BRONZE

GTR

18"

Born for track racing and drifting, it is designed to offer very low offsets, even negative ones, allowing the use of large tires. Ideal as a rear wheel, when combined with the Excalibur 18 as a front wheel.



SIZE	ET Min	ET Max	PCD Min	PCD Max	Weight (kg)
10,5 x 18"	-6	52	98 x 4	130 x 5	From 11.5 to 11.9
11 x 18"	0	58	98 x 4	130 x 5	From 11.7 to 12.1

AVAILABLE COLORS

STANDARD COLORS



WHITE

MATT BLACK



GLOSSY BLACK



SILVER



GOLD

ON DEMAND COLORS



MATT ANTHRACITE



GLOSSY ANTHRACITE



MATT BRONZE



GLOSSY BRONZE

FORMULACORSE

13"

The wheel dedicated to *single-seater cars*, characterized by an incredible lightness and excellent cooling properties under braking. It is also available for Dallara Formula 3 and other customized applications.



SIZE	ET Min	ET Max	PCD Min	PCD Max	Weight (kg)
8 x 13"	-19	12	80	100	From 3.9 to 4.3
8,5 x 13"	-19	19	80	100	From 3.9 to 4.3
9 x 13"	-12	19	80	100	From 4.1 to 4.5
10 x 13"	7	38	80	100	From 4.7 to 4.9
10,5 x 13"	7	38	80	100	From 4.7 to 4.9

AVAILABLE COLORS

STANDARD

ON DEMAND COLORS



GLOSSY ANTHRACITE



MATT BLACK



GLOSSY BLACK



SILVER



GOLD



MATT ANTHRACITE



WHITE



MATT BRONZE



GLOSSY BRONZE

X3MAZERO

The super-light alloy wheel dedicated to tarmac and characterized by the **flexible design of the hub**, with single nut or bolt fixing, which makes it adaptable to many car models.

13"



SIZE	ET Min	ET Max	PCD Min	PCD Max	Weight (kg)
6,5 x 13"	-31	25	98 x 4	108 x 5	From 4.4 to 4.6
7 x 13"	-25	31	80	108 x 5	From 4.5 to 4.7
7,5 x 13"	-18	38	80	108 x 5	From 4.6 to 4.8
8 x 13"	-12	44	80	108 x 5	From 4.7 to 4.9
8,5 x 13"	-29	20	80	108 x 5	From 4.8 to 5.3
9 x 13"	-29	20	-19	108 x 5	From 4.8 to 5.3
10 x 13"	-10	40	-12	108 x 5	From 5.5 to 5.9
10,5 x 13"	-10	40	7	108 x 5	From 5.5 to 5.9

AVAILABLE COLORS

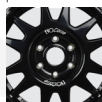
STANDARD COLORS



WHITE



MATT BLACK



GLOSSY BLACK



SILVER



GOLD



MATT ANTHRACITE



GLOSSY ANTHRACITE



MATT BRONZE



GLOSSY BRONZE

ON DEMAND COLORS

X3MAZERO

15"

The queen of circuit racing, able to compete with magnesium wheels. The low weight increases control and acceleration without altering its **stiffness and strength** properties.



SIZE	ET Min	ET Max	PCD Min	PCD Max	Weight (kg)
8 x 15"	0	40	98 x 4	120 x 5	From 5.8 to 6.5

AVAILABLE COLORS

STANDARD COLORS

ON DEMAND COLORS



WHITE



MATT BLACK



GLOSSY BLACK



SILVER



GOLD



MATT ANTHRACITE



GLOSSY ANTHRACITE



MATT BRONZE



GLOSSY BRONZE



ERG

CECOMP

SELENIA
RACING OIL

sparco

brembo

TRW Sabelt

CHAMPION

SKF
BILSTEIN

LEGEND WHEELS

BY
EVO *Corse*

SB9RAGNO

17"

The faithful replica of the wheel for **Renault Clio Williams**. The legendary "ragno" wheel with an unmistakable design.



SIZE	ET Min	ET Max	PCD Min	PCD Max	Weight (kg)
7 X 17"	35	50	100 X 4	120 x 5	From 9.5 to 10.5

AVAILABLE COLORS

STANDARD COLORS

ON DEMAND COLORS



WHITE



MATT BLACK



GLOSSY BLACK



SILVER



GOLD



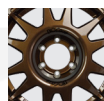
MATT ANTHRACITE



GLOSSY ANTHRACITE



MATT BRONZE



GLOSSY BRONZE

RALLYZERO

Inspired by a **rally classic**, but updated and improved in the light of the most **modern technologies**. RallyZero is compatible with both the latest generation cars and the legends of glory days.

17" / 18"



SIZE	ET Min	ET Max	PCD Min	PCD Max	Weight (kg)
7 x 17"	0	40	98 x 4	130 x 5	From 9.9 to 10.5
8 x 17"	12	45	98 x 4	130 x 5	From 10.2 to 10.8
8 x 18"	12	45	98 x 4	130 x 5	From 11.3 to 11.9

AVAILABLE COLORS

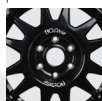
STANDARD COLORS



WHITE



MATT BLACK



GLOSSY BLACK



SILVER



GOLD



MATT ANTHRACITE



GLOSSY ANTHRACITE



MATT BRONZE



GLOSSY BRONZE

ON DEMAND COLORS

MONTECORSE

17"

The wheel designed for the nostalgics of the legendary **Lancia Delta**. A faithful replica of the magnesium original, with 2 kg less than the alternatives on the market.



SIZE	ET Min	ET Max	PCD Min	PCD Max	Weight (kg)
7 x 17"	4	45	98 x 4	130 x 5	From 10.4 to 11.5
8 x 17"	17	58	98 x 4	130 x 5	From 11.2 to 11.9

AVAILABLE COLORS

STANDARD COLORS

ON DEMAND COLORS



WHITE



MATT BLACK



GLOSSY BLACK



SILVER



GOLD



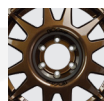
MATT ANTHRACITE



GLOSSY ANTHRACITE



MATT BRONZE



GLOSSY BRONZE

MONTECORSE

A **new and revised version** of the classic MonteCorse 17, optimized to reduce the weight without compromising its soul. Now dedicated to modern and more performing cars.

18"



SIZE	ET Min	ET Max	PCD Min	PCD Max	Weight (kg)
8 x 18"	20	50	98 x 4	130 x 5	From 10.9 to 11.5

AVAILABLE COLORS

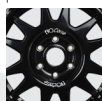
STANDARD COLORS



WHITE



MATT BLACK



GLOSSY BLACK



SILVER



GOLD

ON DEMAND COLORS



MATT ANTHRACITE



GLOSSY ANTHRACITE



MATT BRONZE



GLOSSY BRONZE



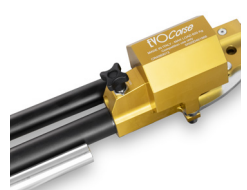
BY
EVOCorse

OUR JACKS

EVOJACK

EVOjack is the ultra-fast **professional** jack designed for equipping the best rally cars. Indispensable for emergency situations in races and tire reversal in special stages.

TECHNICAL FEATURES	
Adjustable foot	Aircraft aluminum machined from solid
Weight	3.89 kg
Lifting speed	8 strokes to maximum extension
Lifting weight	600.0 kg
Minimum height	10.5 cm
Maximum height	41.0 cm
Extension	32.0 cm
Length when closed	61.0 cm
Pin	- Ø 21, 23, 25, 27 or 30 mm - Hexagonal section CH17



AVAILABLE COLOR



Gold

EVOCRK



EVOcrk is the **practical** quick action hydraulic jack dedicated to rally cars and also suitable for heavy use.

TECHNICAL FEATURES

Adjustable foot	Technopolymer with rubber bottom
Weight	3.50 kg
Lifting speed	9/10 strokes to maximum extension
Lifting weight	600.0 kg
Minimum height	9.0 cm
Maximum height	34.0 cm
Extension	27.0 cm
Length when closed	54.0 cm
Pin	- Ø 22 mm - Different sizes on demand



AVAILABLE COLOR

Gold 

OFFCRK

OFFcrk is the **practical and light** hydraulic jack designed for offroad racing vehicles of all categories and also suitable for heavy use. The product is characterized by an aluminum strong foot and a large extension for offroad suspension with extreme elongations.

TECHNICAL FEATURES

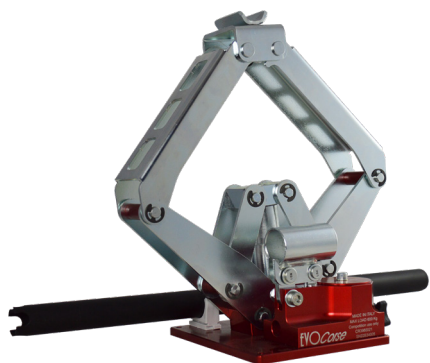
Adjustable foot	Adjustable foot, aircraft aluminum machined from solid
Weight	5.90 kg
Lifting speed	18 strokes to maximum extension
Lifting weight	1200.0 kg
Minimum height	10.0 cm
Maximum height	48.0 cm
Extension	43.0 cm
Length when closed	70.0 cm
Pin	- Hexagonal section CH17 - Different sizes on demand



AVAILABLE COLOR

 Black

EVOJACK QUADRA



EVOjack Quadra is the quick **scissor hydraulic jack** intended for the world of competition and aimed at both experienced users and beginners. The universal support bracket makes it suitable for cars that do not have the possibility to insert the lifting pin.

TECHNICAL FEATURES

Adjustable foot	Aircraft aluminum machined from solid
Weight	5.10 kg
Lifting speed	24 strokes to maximum extension
Lifting weight	600.0 kg
Minimum height	16.0 cm
Maximum height	39.5 cm
Extension	23.5 cm
Length when closed	39.0 cm



AVAILABLE COLOR

Red 



**HARDWARE
& SPECIAL PARTS**

BY
EVO *Corse*

P-DEF

Innovative plates in Pyroclast, a material with exceptional insulating properties and resistance to compression. With their **lightness and extremely reduced thickness**, they solve "vapor lock" problems even for the most powerful braking systems.



DATA SHEET PYROCLAST 600

Properties	VALUE	UM	SPECS
Thermal conductivity	0,21	W/mK	DIN 52612
Heat resistance	620	C°	
Thickness	1+-0.15	Mm	
Density	2.12	Cm ³	ISO 1183 method 3
Water absorption	<0.6	%	ISO 62 method 1
Flammability	94 V-0	According	UL 94
Flexural strenght	150	Mpa	ISO 178

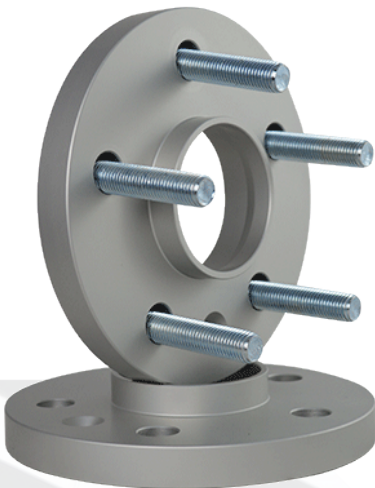
HARDWARE



EVO Corse hardware covers the entire range of aftermarket fixings. From solutions with lightened nut in aerospace alloy and conversion stud for racing use, to nuts and bolts with variation of PCD, passing through studs and bolts with resistance classes up to 10.9 and **precise aluminum centering rings** dedicated to the most varied applications.

SPACERS

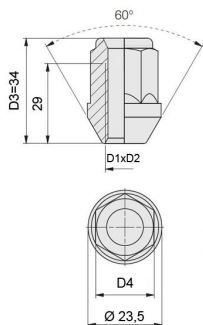
Our range of aluminum spacers consists of products made from billet and machined with **CNC machines** to achieve maximum strength and reliability. A wide range that goes from 5 to 50 mm.



SPACERS RANGE

- | |
|--------------------------------------|
| Standard spacers w/o bolts and nuts |
| Standard spacers with bolts and nuts |
| Spacers with double bolts |
| Spacers for offroad vehicles |
| Spacers for double centering |
| Lightened spacers |

ALUMINUM LUG NUT



High resistance lug nut made from extruded bars of 7075-T6 aluminum alloy for aeronautical use. The hard anodized coating protects the surface of the nut from abrasion and scoring. **Suitable both for tuning and racing use.**

TECHNICAL FEATURES	
Type	60° tapered lug nut
Thread	M12x1.5 / M12x1.25 / M14x1.5 / M14x1.25
Length	34 mm
Key	19
Weight	19 gr

HUB CENTRIC SPIGOT

Anelli di centraggio in alluminio o plastica per cerchi in lega.

The use of the aluminum ring is recommended for sports and racing applications because it guarantees greater resistance to high temperatures.

TECHNICAL FEATURES		
Material	Aluminum	Plastic
External diameter	60,1 / 65,1 / 67,1 / 75 mm	60,1 / 67,1 / 106,1 / 108,1 / 110,1 mm
Internal diameter	54,1 / 56,1 / 57,1 / 58,1 / 59,1 / 60,1 / 63,4 / 64,1 / 65,1 / 66,1 / 66,5 / 66,6 / 67,1 mm	54,1 / 56,1 / 56,1 / 56,6 / 57,1 / 58,1 / 60,1 / 64,1 / 66,1 / 67,1 / 78,1 / 93,1 / 106,1 mm



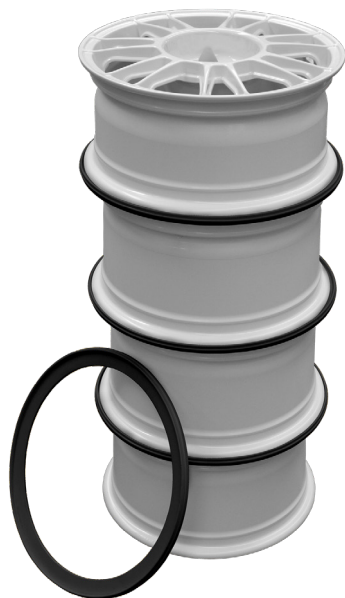
WHEEL STACKING RING

Ecological polyethylene **ring for stacking wheels** in the warehouse, garage or paddock. Positioned between one wheel and the other, the ring protects the rim edge and prevent movements of the wheel thanks to the lip on the external side. **Suitable also to wheels with tires.** Available on demand also resistant to high temperatures (track use with tyrewarmers).

TECHNICAL FEATURES

Wheel Diameter

13" / 14" / 15" / 16" / 17" / 18" /
19" / 20" / 21"



TIRE TROLLEY



Used in the paddocks of all racetracks to handle the sets of tires and rims, the tire trolley is a handy tool that allows to easily move wheels – with or without tires – and to manage the space in the garage or warehouse. **Provided with solid casters**, in can load up to 120 kg.

THERMAL BOTTLE

Stainless steel thermal bottle made with **500 ml capacity and double insulating wall** to maintain the temperature of both cold and hot liquids for a long time.



• **Air tight cap
100% leak proof**

• **AISI 304 stainless steel
for food use**

• **Double vacuum insulating
wall for maximum
thermal performance**

• **Anti-scratch
satin finish**



COLD DRINKS FOR 15h



HOT DRINKS FOR 5h

White ceramic mug with 325 ml capacity.

It features graphics inspired by one of the most famous Dolomites landscapes "Lavaredo's Three Peaks".



MUG

TECHNICAL FEATURES

Size M - L - XL - XXL

Colours White - Black

T-SHIRT



HOODIE

TECHNICAL FEATURES

Size S - M - L - XL

Colours Anthracite - Bordeaux



EVO *Corse*

SUPPLIER TO CHAMPIONS

Via Staizza, 56 - 31033 Castelfranco Veneto (TV) - Italy

by Seido D.E. s.r.l.

Telephone: +39 049 936 5050

E-mail: evo@evocorse.com

Website: www.evocorse.com

Social:    